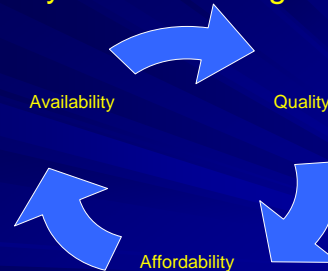


Fund for Infants And Toddlers FIAT

Building EC Financial Aid

National Smart Start Conference
May 2011
Greensboro, NC

Child Care Trilemma as Systems Planning Context



Overview

- Quality – KS Quality Rating and Improvement System (KQRIS)
- Availability – Supply and Demand in Douglas County
- Affordability
 - Existing Financial Aid
 - FIAT program design
- Outcomes
- Implementation Challenges

Picture of Quality In Kansas

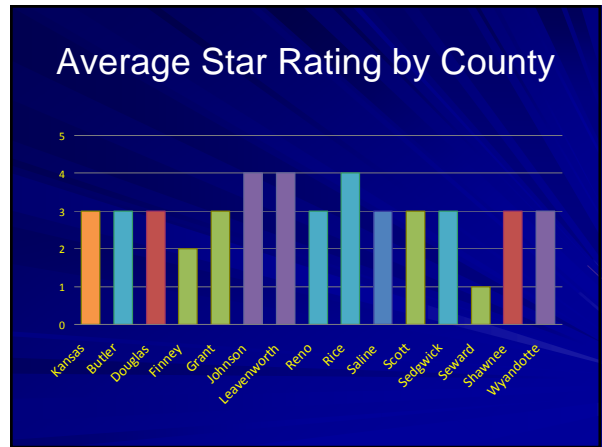
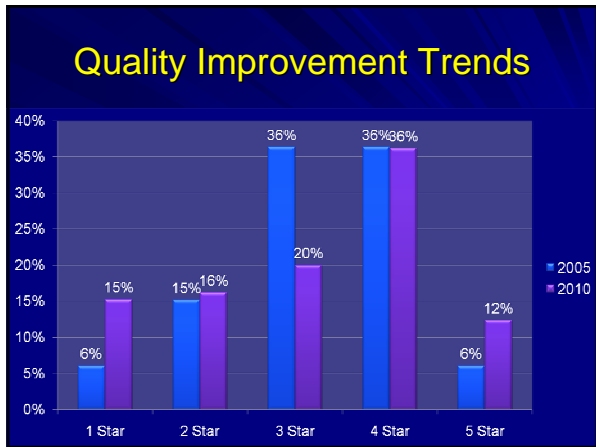
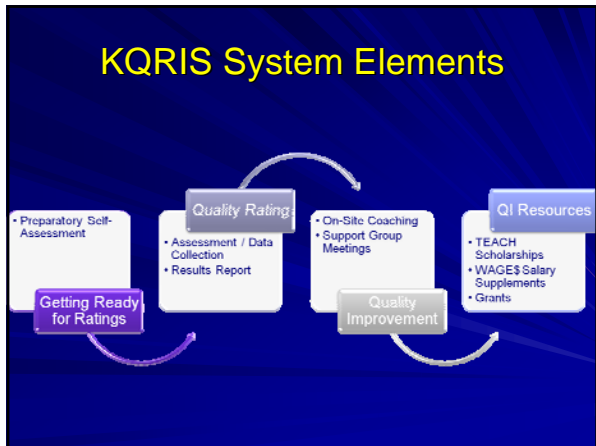
- 152,120 children in regulated, non-parental care
- Kansas in bottom 10 states for oversight & regulation
- NAEYC accreditation declined 14 to 5%

Picture of Quality In Kansas

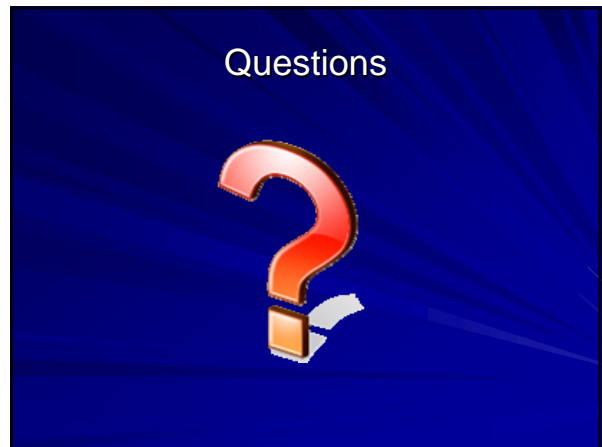
- 88% of I/T & 74% of FCC assessed inadequate to minimal
- 52% parents rated quality as #1 priority
- <1% of programs have access to KQRIS

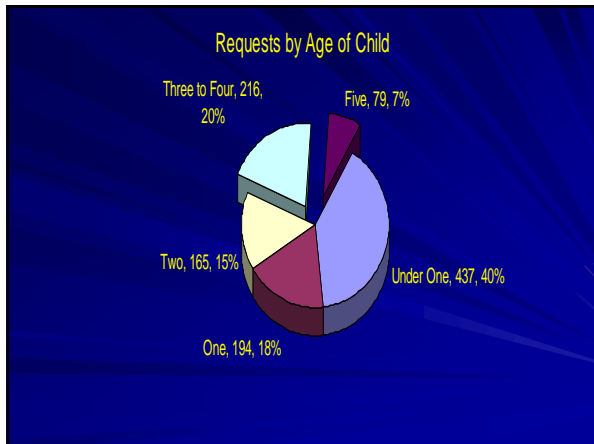
Kansas QRIS Overview

- | KQRIS Components | KQRIS Points Conversion |
|--|-------------------------|
| ■ Learning Environment
> 0 – 10 points | ■ 1 star = 0 – 9 pts |
| ■ Family Partnerships
> 0 – 10 points | ■ 2 star = 10 – 17 pts |
| ■ Training & Education
> 0 – 10 points | ■ 3 star = 18 – 25 pts |
| ■ Adult-Child Ratios/Group Size
> 0 – 10 points | ■ 4 star = 26 – 33 pts |
| ■ Program Accreditation
> 2 points | ■ 5 star = 34 – 42 pts |



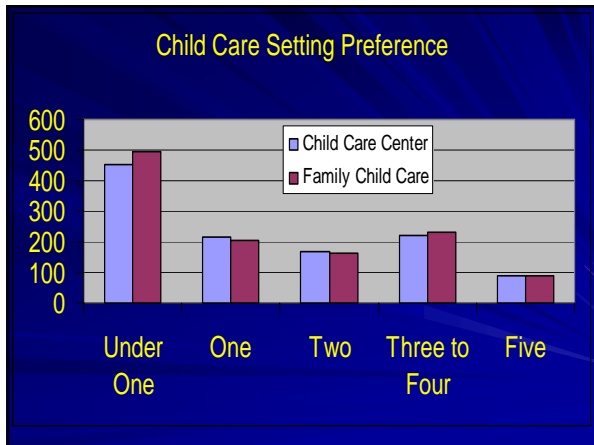
- ## Douglas County KQRIS Results
- 18 programs
 - 8 centers - 446 children
 - 10 family child care - 66 children
 - Average Rating
 - 3 Stars
 - Learning Environment: 5 points
 - Family Partnerships: 4 points
 - Training & Education: 3 points
 - Ratios & Group Size: 10 points
 - Accreditation: 0 points





Supply of Infant Care

- 50 licensed family child care homes accept infants
- 150 family child care home slots
- 72 center-based slots



State College tuition + fees

\$6,666/YR or \$555.50/MONTH

■ Centers:	■ Family care:
- infant	- Infant
■ \$9,973 / YEAR	■ \$6,269 / YEAR
■ \$831.08 / MONTH	■ \$522.46 / MONTH
- 4-year-old	- 4-year-old
■ \$7,123 / YEAR	■ \$5,455 / YEAR
■ \$593.58 / MONTH	■ \$454.58 / MONTH

Financial Aid

- **SRS Child Care Subsidies**
 - Must work 20 hours / week
 - 70% to 185% of FPL
 - Family Share Payment recommended
 - Electronic payment system
 - Contracted Child Care Providers

Financial Aid

- **United Way Scholarships**
 - Families earning < 300% FPL
 - Sliding scale payments with family share tied to market rate
 - 8 center-based programs participating
 - 2 center have infant slots
 - Available for students not eligible for State Subsidy
 - Paid directly to child care provider
 - No link to quality

Fund for Infants And Toddlers

- Comprehensive plan to address systemic issues affecting access, availability, and quality of infant/toddler care.
 - Affordability – tuition scholarships for eligible families
 - Availability – Providers paid > market rate
 - Quality – Providers required to participate in KQRIS

FIAT Program Design

- AFFORDABILITY
 - lower family share for tuition
- AVAILABILITY
 - use market and existing financial aid
 - Set prices high enough to induce supply
- QUALITY
 - Increase provider compensation levels
 - establish & communicate clear program standards

FIAT Target Populations

- Families with infants and Toddlers earning 186% - 300% FPL
- Family Child Care Homes
 - 218 Licensed Family Child Care Homes
 - 88% of care takes place in FCC
 - 4.5 % of FCC homes participating in KQRIS
- Center Based Programs
 - 29 Child Care Centers
 - 10 provide infant care

FIAT Target Activity

- Financial aid to Families
 - Sliding scale tied to Market Rates
- Increased Revenue for Programs
 - Daily rate set > Market rate
 - Revenue = Subsidies + Family Share + FIAT
- Must be High Quality
 - Quality identified as KQRIS or NAEYC Accreditation

Outcomes

- Develop financial aid system
 - Political Action
 - Legislative supports
 - Advocate for child care tax incentives
 - Social/Civic Buy-In
 - Employers – economic development tool
 - Local government – fiscal support for child care
 - Increase Quality
 - Link quality care and financial aid - accountability

Program Evaluation

- Economic Impact Study - Institute for Policy & Social Research – University of Kansas
 - Reduced employee turnover
 - Increased employee economic security and stability
 - Increased employer ability to attract and retain employees
 - Higher employee productivity
 - Increased stability in housing market
 - Increased stability and quality of local child care industry

Implementation Challenges

- Employer/Employee Participation
 - Originally 2 employers – limited number of eligible employees
 - Added 3rd employer – improved participation, but challenges remain:
 - Determining effective marketing tool
 - Targeting eligible employees
 - Employee unwilling to change provider
 - Provider reluctant to participate in KQRIS

Evaluation Challenges

- Sample Size
 - Limit to 12 families employed at 3 sites
 - Actual participation < 12
 - Difficult to extrapolate data to larger population
 - Reliant upon anecdotal information

But, the good news

- Contacted by ARRA funder
 - Believes in business involvement concept
 - Understands implementation challenges encountered
 - Ask for recommendations from evaluator for recommendations for improvements in the program
 - Funder plans to incorporate engaging businesses in child care supports in future proposals

Questions



Contact Information

Anna Jenny, Executive Director

- Douglas County Child Development Association, 935 Iowa Street, Suite 7, Lawrence, KS 66044, ajenny@dccda.org, 785 842 9679

Rich Minder, Collaborative Projects Coordinator

- Success By 6 Coalition of Do. Co., 2518 Ridge Court, Lawrence, KS 66046, successby6@sunflower.com, 785-842-8719

Jennifer Hecker, Director

- Kansas Quality Rating and Improvement System (KQRIS), Child Care Aware® of Kansas jennifer@ks.childcareaware.org, 785-628-1624, Toll Free 877-678-2548

How Fund for Infants and Toddlers (FIAT) Financial Aid System fits within SB6 Coalition EC Investments

1.0 FTE Collaborative Projects Coordinator
 .25 FTE Bookkeeper

Early Care & Education

Family Support Systems

Do. Co. Child Development Association

Child Care Aware® of KS

EC Special Ed. Consulting (Part C)

Social - Emotional Support

Health Services

Child Care Financial Aid

ERC Resource & Referral (ERC)

KQRIS Rating Specialist

Fund for Infants and Toddlers (FIAT)

United Way Scholarships

KQRIS Quality Improvement Coach

Positive Behavior Supports Program

Child Care Referral Services

CSEFEL Classroom Coaches

CSEFEL Behavior Coaches

Strengthening Families Program

EC Mental Health Consultation

KS Prek Program

Community-Based Classrooms

School-Based Classrooms

EC Mental Health Specialist (Mental Health Center)

Healthy Families Bi-Lingual Nurse-Case Manager (Health Dept)

EC Mental Health Specialist ((Part C)

ABCD Oral Health Program (Dental Clinic)

EC Mental Health (Centro Hispano Resource Center)

Case Management (Success By 6)